

LMD PH 502

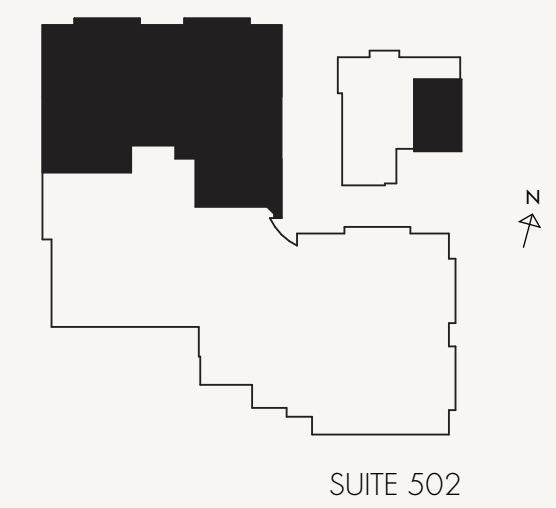
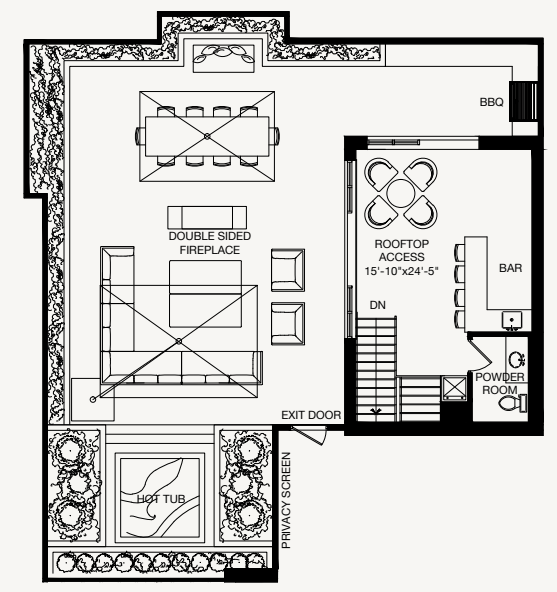
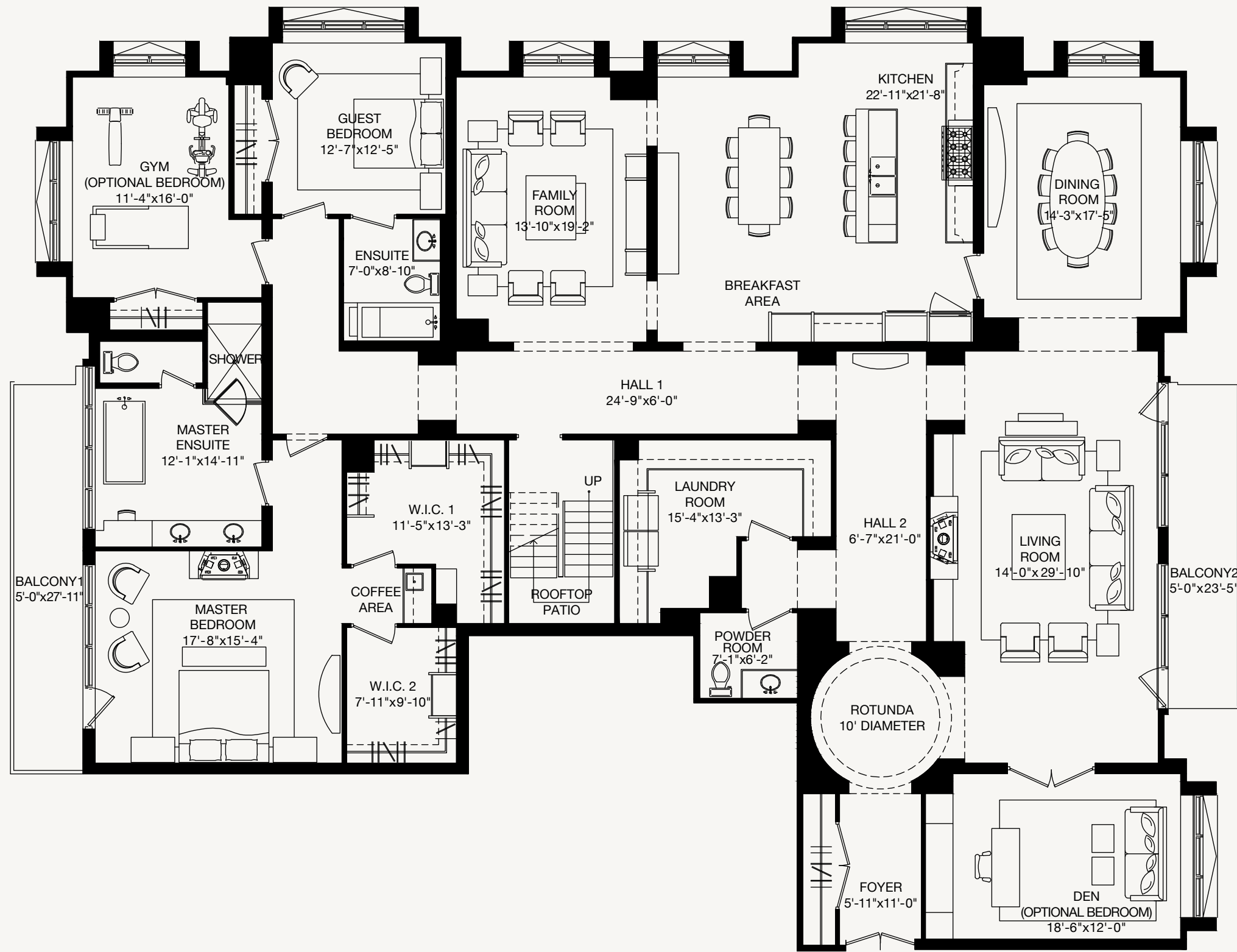
4 BEDROOM
4,960 ft²

Foyer 5'-11" x 11'-0"	Guest Bedroom 12'-7" x 12'-5"	W.I.C. 1 11'-5" x 13'-3"
Den (Opt. Bedroom) 18'-6" x 12'-0"	Ensuite 7'-0" x 8'-10"	Hall 1 24'-9" x 6'-0"
Living Room 14'-0" x 29'-10"	Gym (Opt. Bedroom) 11'-4" x 16'-0"	Laundry Room 15'-4" x 13'-3"
Balcony 2 5'-0" x 23'-5"	Master Ensuite 12'-1" x 14'-11"	Hall 2 6'-7" x 21'-0"
Dining Room 14'-3" x 17'-5"	Master Bedroom 17'-8" x 15'-4"	Powder Room 7'-1" x 6'-2"
Kitchen 22'-11" x 21'-8"	Balcony 1 5'-0" x 27'-11"	Rooftop Patio 15'-10" x 24'-5"
Family Room 13'-10" x 19'-2"	W.I.C. 2 7'-11" x 9'-10"	

Truly a superb place to call home, this huge, traditionally styled two-bedroom plus den plus office suite facilitates all the pleasures of life. Revel in the freedom of spaciousness, first evoked in the large rotunda entry foyer, and reinforced by the grand dimensions of the formal dining room. It opens to the living room and kitchen with its large island and many more seating options. Together with the astounding 2,000-square-foot rooftop terrace and its bar, lounge and powder room, this home opens up all the possibilities of private relaxation and entertaining of guests. Aloft above the trees of the private forest and ravine, there is plenty of room for outdoor cooking, dining and enjoying the spectacular city views to the north and west.

On the main floor, walls of floor-to-ceiling glass provide east, north and west exposure, creating a light-filled atmosphere. Two 25-foot-wide terraces covered in black flamed slate pavers face the park to the west and the private gardens and fountain to the east. In winter, the large gas fireplace creates a cozy atmosphere. For work or leisure pursuits, a large office is connected with double doors to the living room. An additional den can be used as a gym or extra bedroom.

Sequestered in its own corner, the large master bedroom opens out onto a third terrace with views of the forest. This bedroom is replete with space, for seating and possessions, in its two generously sized walk-in his and her dressing rooms. The large master ensuite completes the lap of luxury with double sinks, a soaker tub and a separate oversized shower.



Floorplan measurements are approximate and are for illustrative purposes only.