

## LMD 305

2 BEDROOM + DEN  
2,043 ft<sup>2</sup>

Foyer  
8'-11" x 5'-3"

Powder Room  
5'-0" x 7'-6"

Den  
9'-0" x 10'-9"

Laundry Room  
5'-8" x 6'-3"

Dining Room  
15'-5" x 9'-1"

Kitchen  
13'-9" x 13'-4"

Balcony  
13'-0" x 5'-3"

Living Room  
19'-8" x 18'-8"

Guest Bedroom  
16'-11" x 12'-4"

Ensuite  
5'-0" x 8'-10"

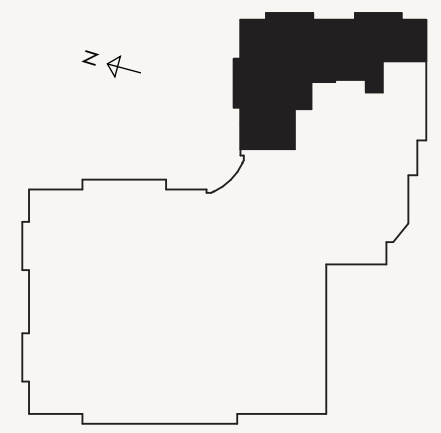
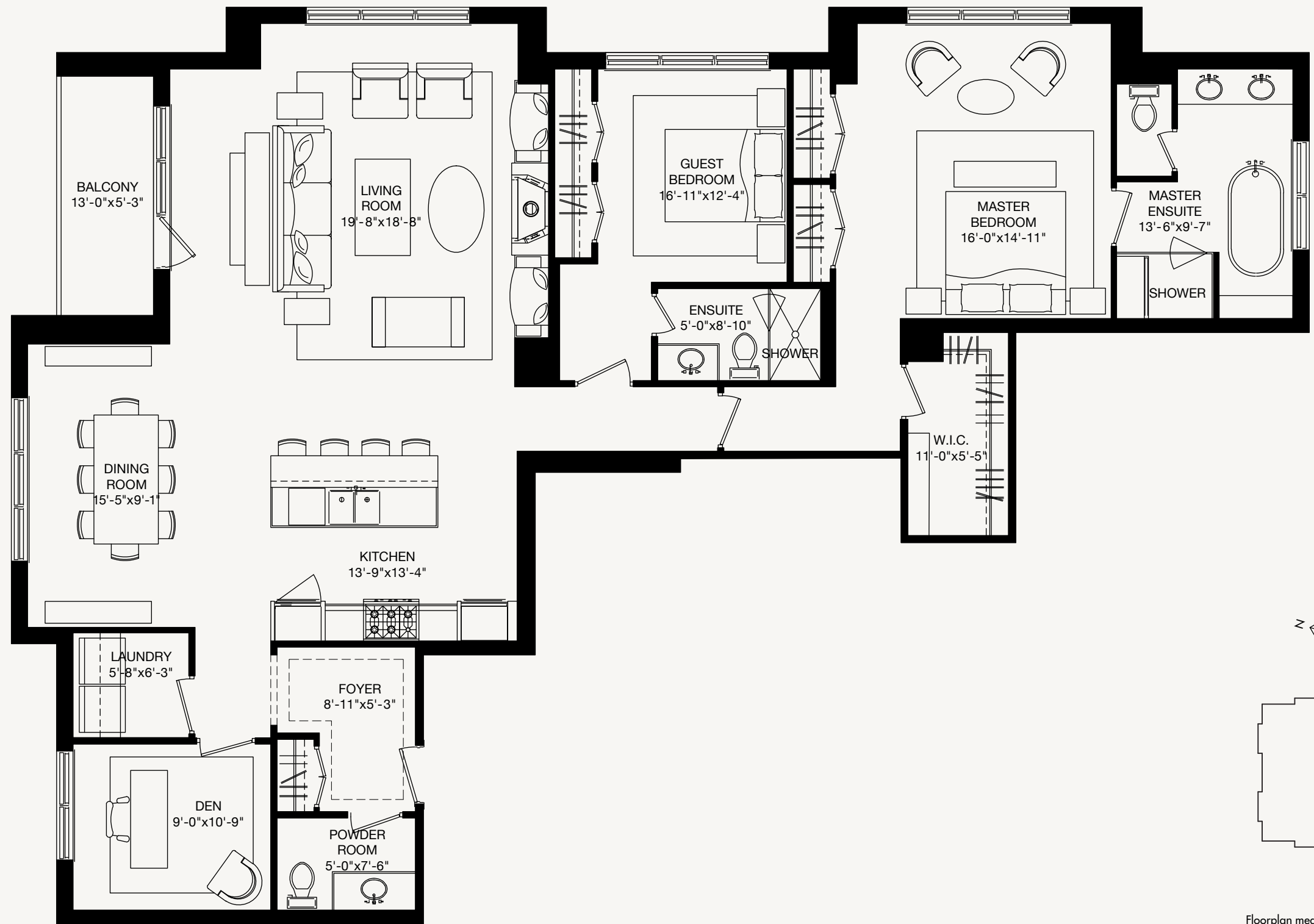
Master Bedroom  
16'-0" x 14'-11"

Master Ensuite  
13'-6" x 9'-7"

W.I.C.  
11'-0" x 5'-5"

Given the range of its beauty, this traditional French-styled two-bedroom plus den suite is an absolute showpiece. The remote-feeling getaway in the city shows a clear interplay between the surrounding landscape and the interior with south, east and north exposure from all rooms. Monumental passageways lead from the foyer to the main living area and covered terrace, overlooking manicured gardens and a graceful fountain. The home truly becomes a living work of art as the sun spills through glass doors, painting the entire space with light. Add the spacious kitchen with an island built for seating groups, and a continuous dining and living area; and you're ready to display your home to however many you choose.

With handcrafted double sinks, a magnificent soaker tub and separate oversized shower, the large master ensuite will keep you relaxed for longer than expected. Harmonious with the ensuite, the large south-facing windows, walk-in closet, and massive master bedroom are the perfect environment for sound sleeps and fulfilling days.



SUITE 305

Floorplan measurements are approximate and are for illustrative purposes only.