

LMD 206

2 BEDROOM

1,859 ft²

Foyer
6'-7" x 8'-1"

Kitchen
20'-3" x 10'-5"

Living Room
15'-1" x 14'-8"

Dining Room
12'-5" x 16'-5"

Terrace
10'-8" x 4'-0"

Guest Bedroom
12'-0" x 10'-7"

Ensuite
5'-1" x 7'-10"

Master Bedroom
10'-7" x 15'-9"

W.I.C.
6'-3" x 9'-0"

Master Ensuite
7'-8" x 15'-9"

Laundry Room
7'-0" x 5'-9"

Hall 1
4'-0" x 11'-10"

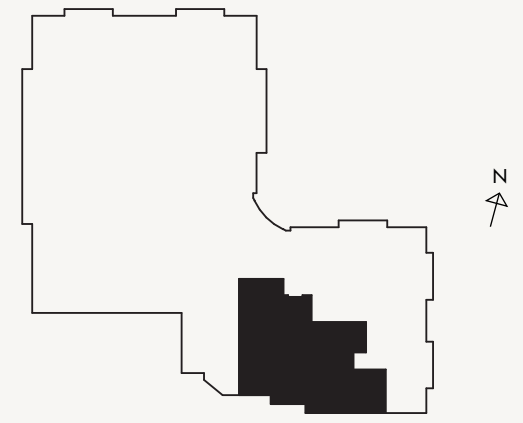
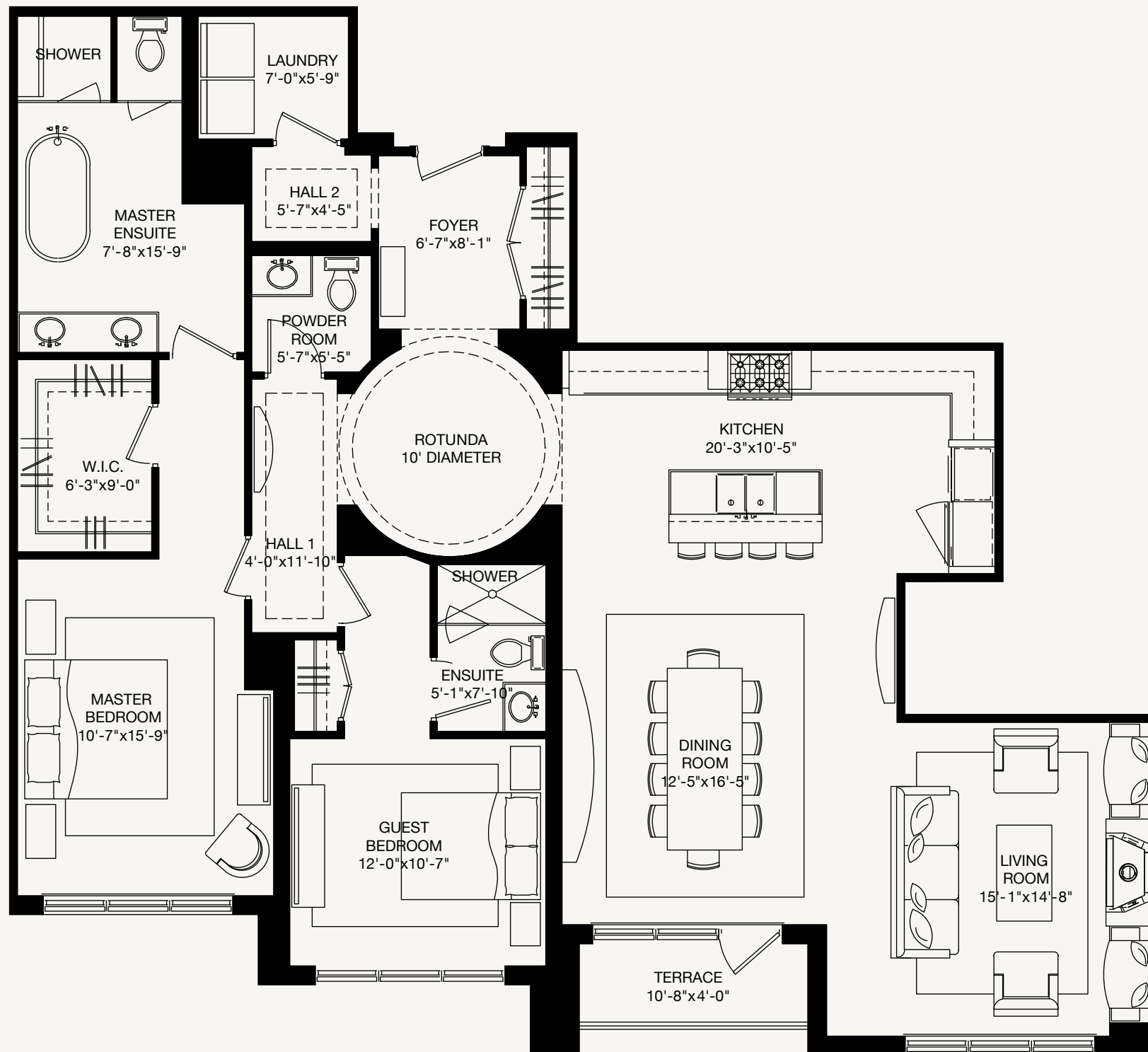
Powder Room
5'-7" x 5'-5"

Hall 2
5'-7" x 4'-5"

With full south-facing exposure, this traditional suite with an enchanting French façade has two bedrooms, a covered terrace, and a large ensuite, each with incredible views of the ravine and parkland.

The open concept floorplan boasts wide halls and doorways, and is lined with floor-to-ceiling windows that lend the space privacy and exposure with hidden blinds. The dining room and well-appointed kitchen are spacious and can easily accommodate large groups or more intimate affairs, with an open flow to the living area warmly outfitted with an ornate gas fireplace.

With ample room for seating, a walk-in closet, and a large south-facing window, the master bedroom is truly a space that will transform you. Matched comfortably with the boudoir, the attached ensuite is adorned with double sinks, a soaker tub and a separate oversized shower. The guest bedroom shares similar luxuries, with an ensuite and large south-facing windows that peer into the forest.



SUITE 206

Floorplan measurements are approximate and are for illustrative purposes only.