

LMD 202

2 BEDROOM + DEN
1,957 ft²

Foyer
5'-1" x 6'-1"

Den
7'-7" x 14'-11"

Dining Room
11'-5" x 15'-0"

Kitchen
15'-10" x 12'-2"

Living Room
19'-4" x 13'-9"

Balcony
5'-3" x 25'-4"

Guest Bedroom
11'-8" x 10'-4"

Ensuite
11'-6" x 6'-0"

Master Bedroom
11'-11" x 18'-8"

W.I.C.
6'-5" x 14'-10"

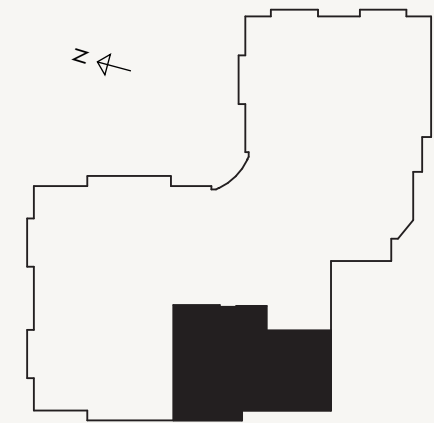
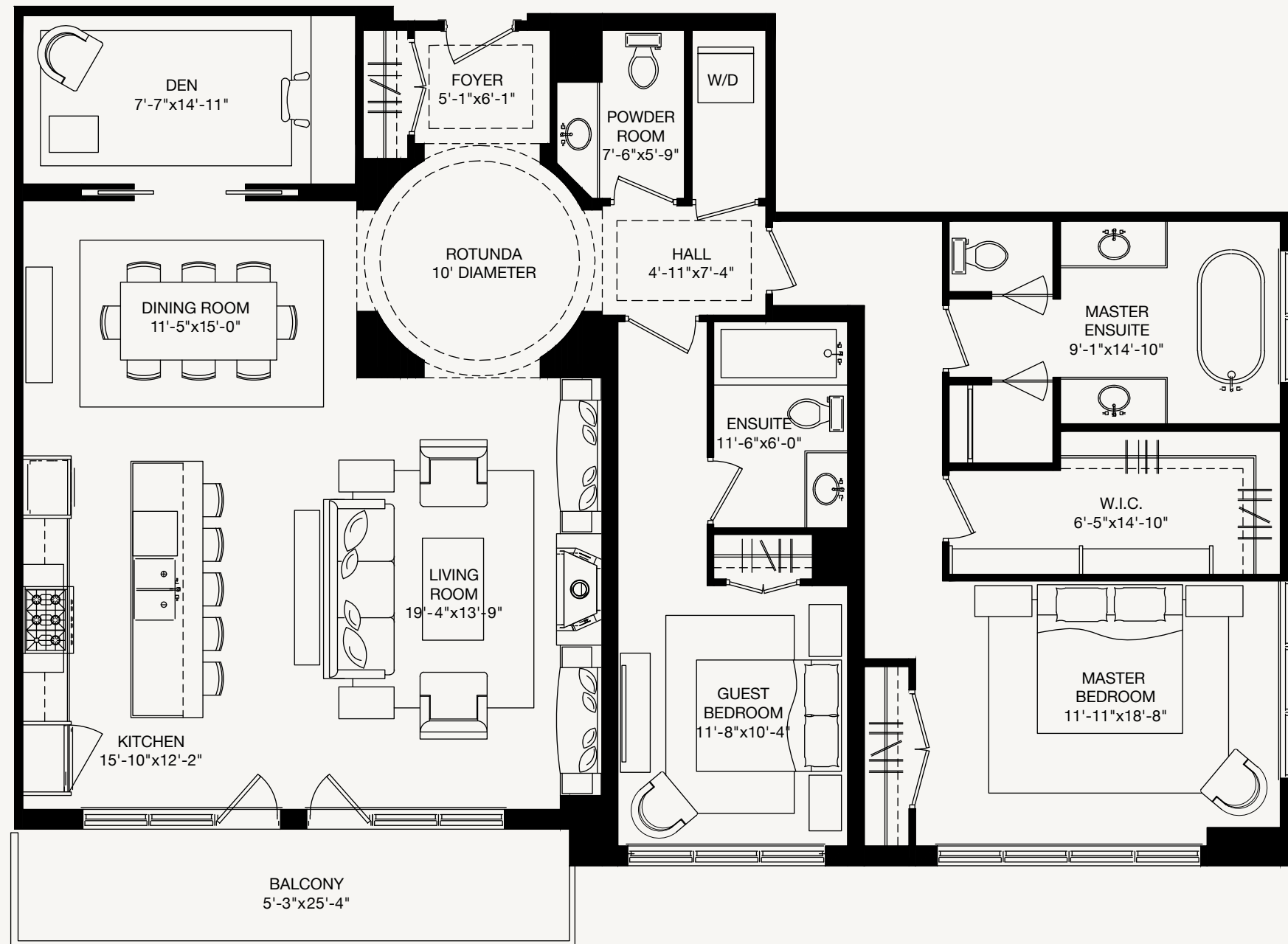
Master Ensuite
9'-1" x 14'-10"

Hall
4'-11" x 7'-4"

Powder Room
7'-6" x 5'-9"

This traditionally styled, two-bedroom suite plus den, faces both south and west through floor-to-ceiling belvederes from all rooms. The picturesque views of the private ravine continue onto the 25-foot-wide terrace covered in black flamed slate pavers. A spacious oasis, the open concept floorplan presents itself with a curved rotunda foyer that leads into the luxurious living area. A large gas fireplace with thoughtfully placed built-in shelving for ornaments brings warmth into the naturally resplendent dining and living area.

A large master bedroom offers ample room for seating and beautiful corner windows with hidden blinds built into valances, providing the ultimate in exposure and privacy. Equipped with a grandiose walk-in dressing room and an additional closet, the bedroom is masterfully designed for optimal comfort. The lavish ensuite impresses as well, with double sinks, a soaker tub and separate oversized shower.



SUITE 202

Floorplan measurements are approximate and are for illustrative purposes only.